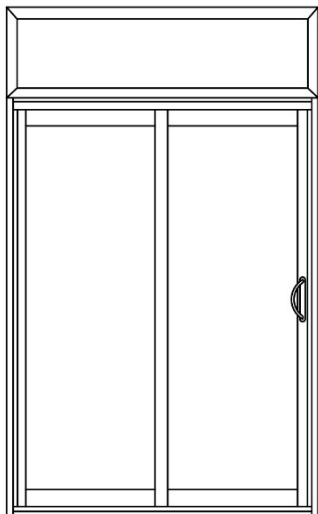


**Installation Guide of a transom on a 6200 Series Sliding Door**

**GENERAL:** Door elevations shown in these instructions are as viewed from the outside.



**1.0 Notes**

**1.1** A door with transom should be installed together as a single unit.

**If door comes Dry-glazed:**

**1.3** Assemble the transom and door frame without glass panels (if installed).

**1.4** Use a pry tool to remove glass stops carefully then proceed to remove the glass from the transom.

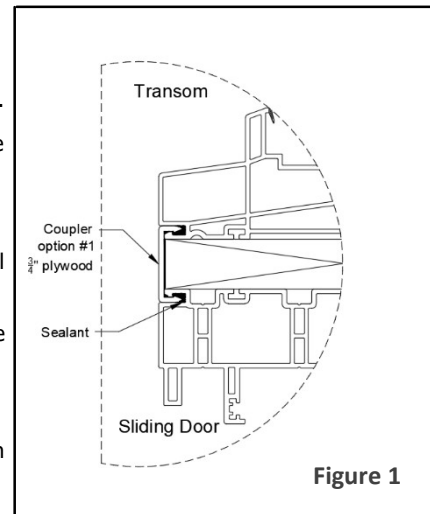
**2.0 How to assemble sliding door and transom**

**2.1** Measure sliding door and transom width, confirm that they are equal sizes.

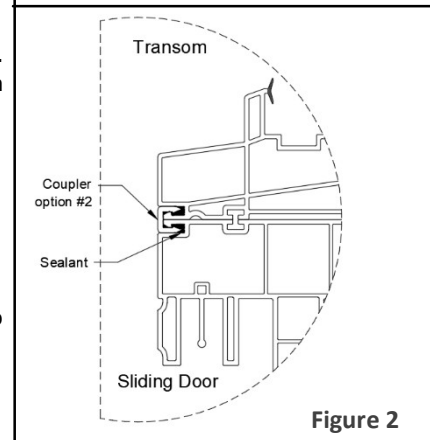
**Note:** If 3/4" plywood supplied, skip to step **2.7**. Clearview will assemble transom to header and seal coupler if 3/4" plywood is required (figure 1).

**2.2** Place sliding door and transom on ground, interior side up.

**2.3** Position transom on top of sidelite header; make sure they align properly.



**Figure 1**



**Figure 2**

**2.4** Apply sealant along the exterior and interior of the transom and sliding door channels (figure 2).

**2.5** While standing over the door, insert coupler into the channel between the transom and sliding door header. Apply pressure to coupler starting from one side all the way to the other. Flip door frame and transom on ground and repeat the same process to insert the coupler on the exterior side.

**2.6** Clean up any excess of sealant from the coupler, transom and sliding door frame.

**2.7** Once assembled, install the door with the transom inside the wall opening.

**Notes:**

- If brickmould is supplied, refer to brickmould installation instructions.
- Follow the Assembly and Installation guide for the 6200 Series door by Clearview to install the door into a wall opening and install the glass panels.
- See figure 4, for recommended anchor points and shim's locations.
- Cover installation holes, with screw caps.

**3.0 How to install the glass into the transom (if dry glazed):**

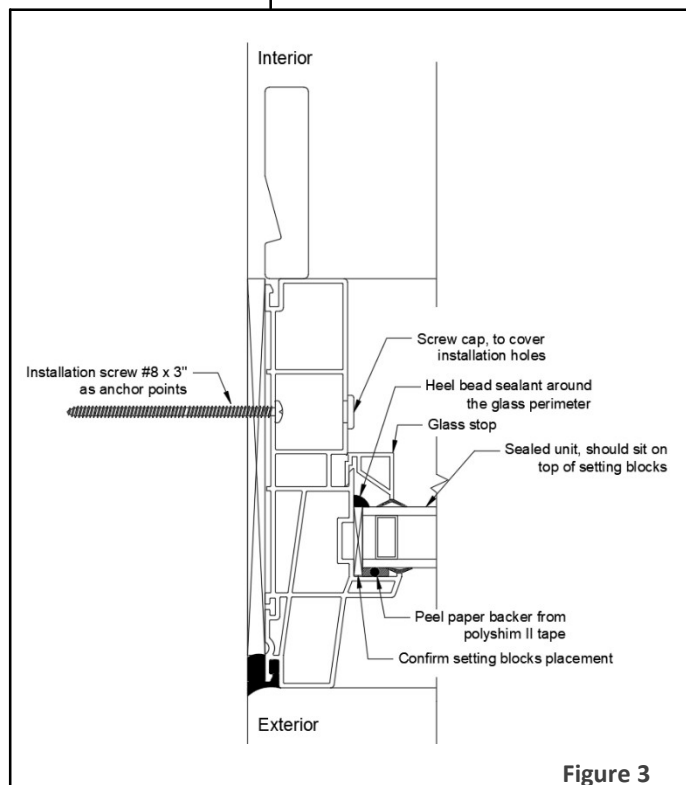
**3.1** Once the sliding door and transom have been assembled and installed into the wall frame opening, peel the paper backer from the Polyshim II tape (figure 3).

**3.2** Confirm that the setting blocks are in place (figure 3). Ensure they are evenly spaced.

**3.3** Insert glass inside the transom frame. The glass should make full contact with the Polyshim II tape and should sit on top of the setting blocks (figure 3).

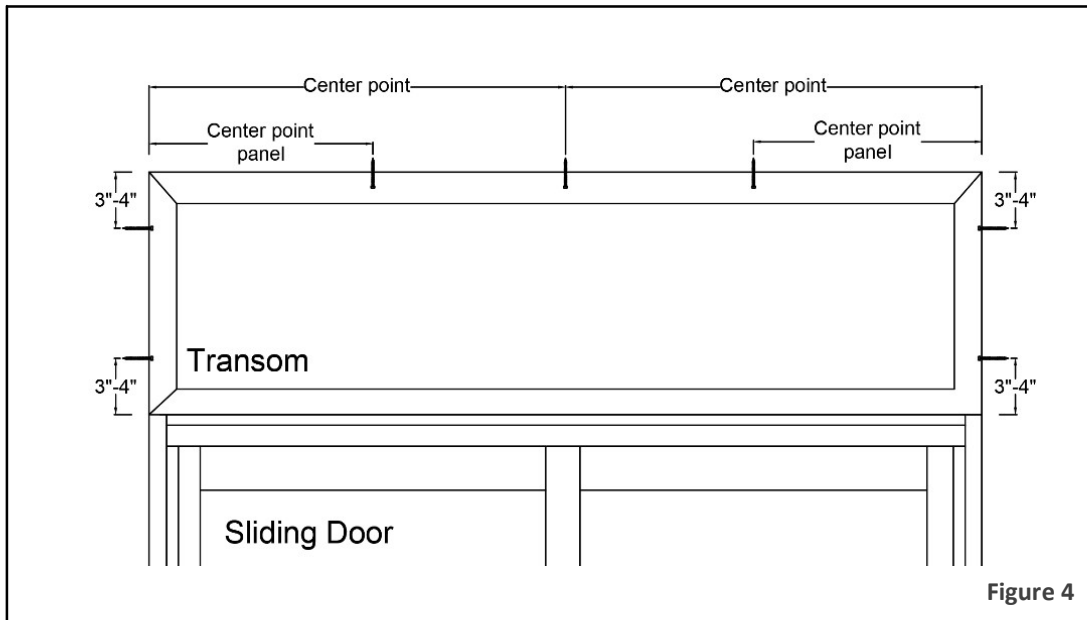
**3.4** Apply a heel bead of sealant around the interior side of the glass, full perimeter (figure 3).

**3.5** Press the glass stops back into place (figure 3).



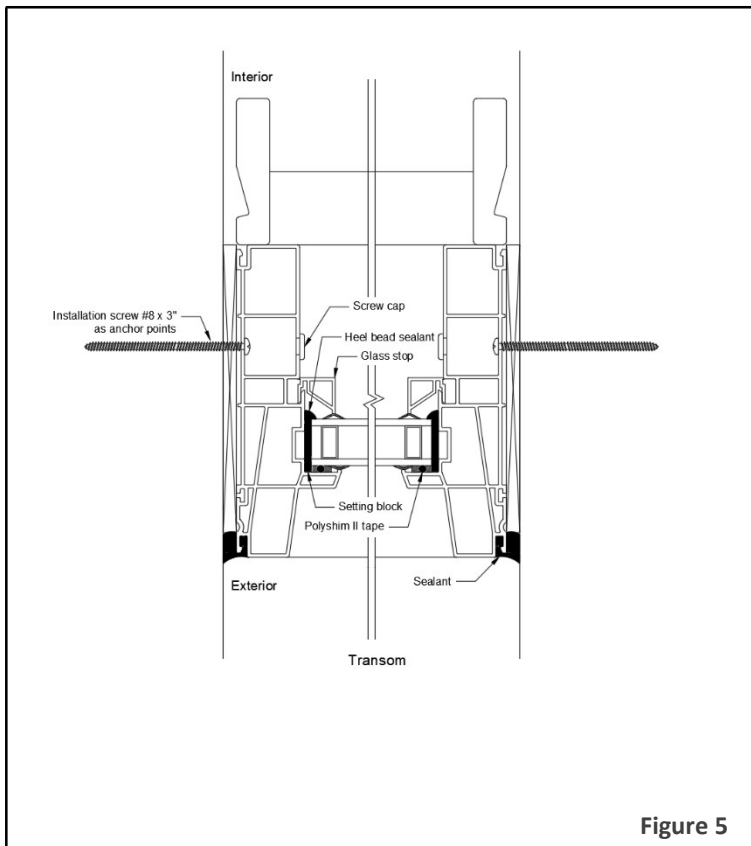
**Figure 3**

**Recommended anchor points and shim's locations:**

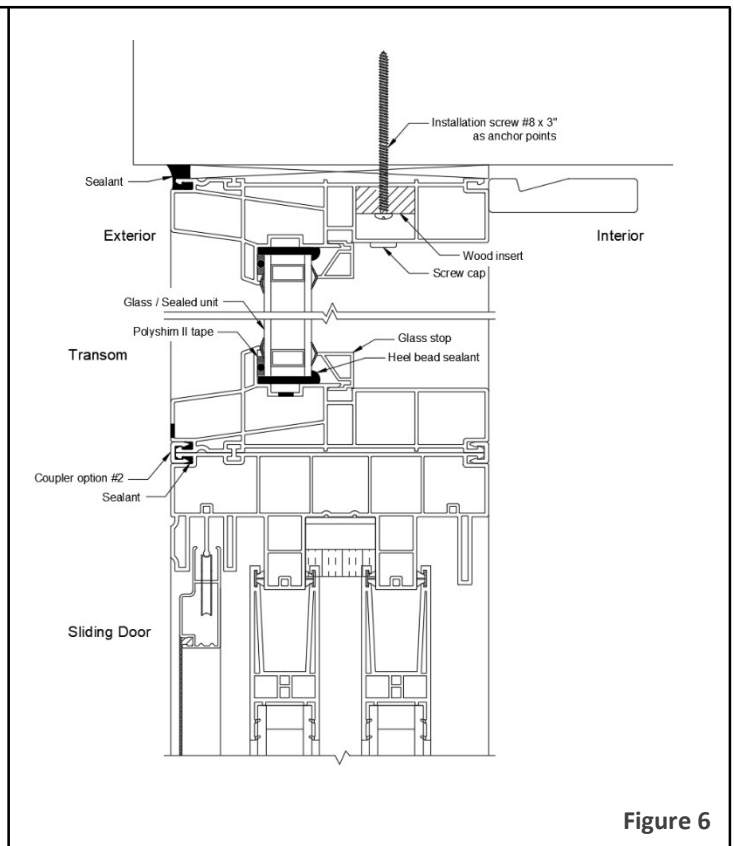


**Figure 4**

**Section details, horizontal and vertical cross sections:**



**Figure 5**



**Figure 6**

Visit Our Web Site @ [www.clearview.on.ca](http://www.clearview.on.ca)

**CLEARVIEW**  
INDUSTRIES LTD

45 Fenmar Drive  
Toronto, Ontario Canada M9L1M1  
Toll: 1-888-253-2739  
Tel: 416-745-6666  
Fax: 416-745-3711  
E: [sales@clearview.on.ca](mailto:sales@clearview.on.ca)