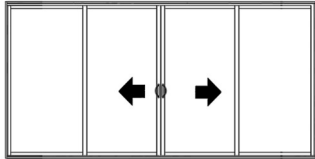


4 PANEL DOOR – INSTALLATION INSTRUCTIONS

GENERAL: Door elevations shown in these instructions are as viewed from the outside.



"OXXO" DOOR

Refer to the 2-panel door instructions and use the following pages as supplement when installing 4 panel doors.

1.0 INSTALLING THE FIXED PANEL

1.1 Follow the 2-panel door instructions and repeat the procedure at both ends.

4.0 INSTALLING THE SILL COVER

4.1 Peel the back of the 1"x 3/8" weather strip with fin provided and stick it on the top, interior side of the sill cover (see figure 1).

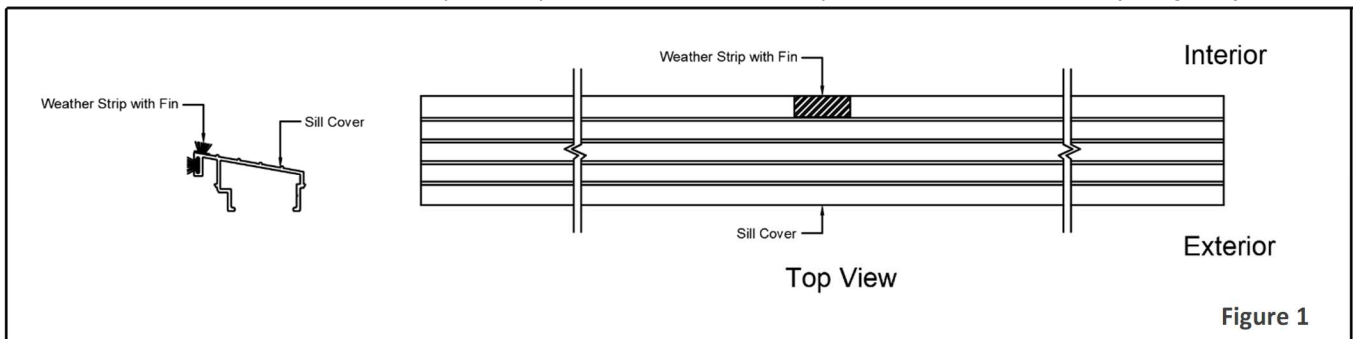


Figure 1

4.2 Follow the 2-panel door instructions and repeat the procedure at both ends (see figure 2).

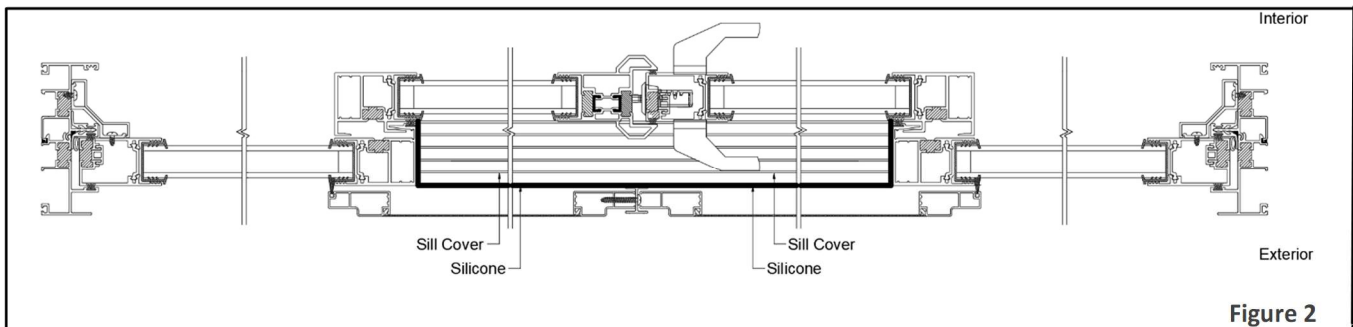


Figure 2

5.0 INSTALLING THE OPERATING PANEL

5.1 Adjust operating panels and wheels in similar manner as 2-panel doors aligning the operating panel to the mullion.

6.0 INSTALLING FILLER BLOCK – 4 PANEL DOOR (FULLY ADJUSTED)

6.1 Measure the gap between the header channel to the top edge of the panel mullion (should be between 1/2" – 7/8"). If the space measured is greater than 7/8", check installation again.

6.2 Using a screwdriver (#2-Robertson or #2-Phillips), lower the panel 1/8", turning the roller adjustment screw counterclockwise.

6.3 With gap measured determine the stack combination of filler blocks to close the gap between header channel and panel mullion (see image and table below). Insert filler block assembly at top of panel mullion cavity (a bead of silicone is recommended) and lower into position. The seal should be facing the header channel.

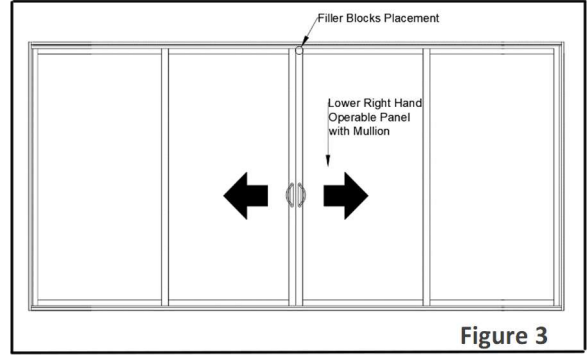


Figure 3

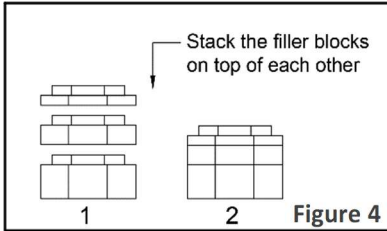


Figure 4

Gap (In)	7/16" Block	1/8" Block	1/4" Block
1/2	✓	X	X
5/8	✓	✓	X
3/4	✓	✓	✓

Figure 5

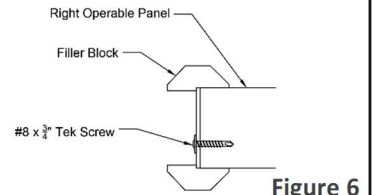


Figure 6

6.4 Use a #8 x 3/4" Tek screw to secure the filler block to the panel mullion. Relocate the panel to its original height (1/8" recommended) by adjusting the roller adjustment turning it clockwise.

7.0 INSTALLING THE SCREEN PANEL

7.1 Before installing the screen, back-off all four wheels by turning the adjustment screws counter-clockwise as shown.

7.2 Insert the screen in the outside track of the frame header, swing the bottom of the screen towards the sill and snap the rollers over the sill screen track as shown.

7.3 Slide the screen in the closing direction to within 1/4" of the jamb. Visually, the joint between the screen and the jambs should be uniform from top to bottom.

7.4 Using a screwdriver adjust the rollers on the bottom of the screen up (clockwise) or down (counterclockwise) to align the screen as shown above. Adjust the top rollers just enough to snug the screen in the top track and allow easy rolling.

7.5 There are 2-mortise screen locks supplied with 4-panel "OXXO" doors/ Using a screwdriver, remove the striker from one of them to create a dummy lock and install this lock to one of the screens as shown.

7.6 On this screen, attach the screen "H" bar using 4-self drilling screws.

7.7 On the other screen, install the mortise screen lock using the factory machined holes provided. With the striker latch in the open position, slide the screens close to each other; mark the location of the top of the striker in the screen "H"-bar, and position the keeper within the "H"-bar so that the striker will cleanly engage the keeper. Attach the keeper to the "H"-bar using the self-drilling screws provided. Ensure the latch securely holds the screens locked and adjust the keeper up or down as necessary.

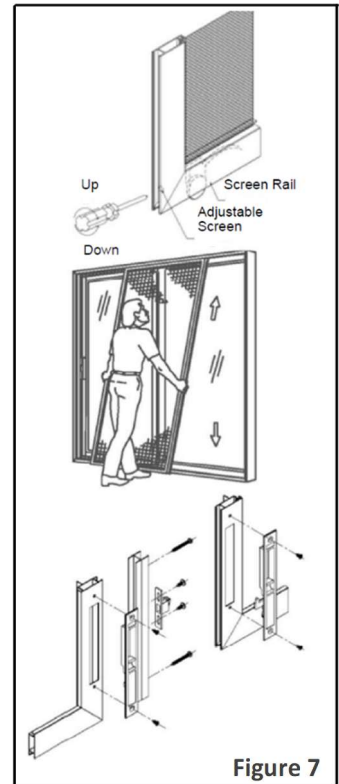


Figure 7

Visit Our Web Site @ www.clearview.on.ca



45 Fenmar Drive
 Toronto, Ontario Canada M9L1M1
 Toll: 1-888-253-2739
 Tel: 416-745-6666
 Fax: 416-745-3711
 E: sales@clearview.on.ca